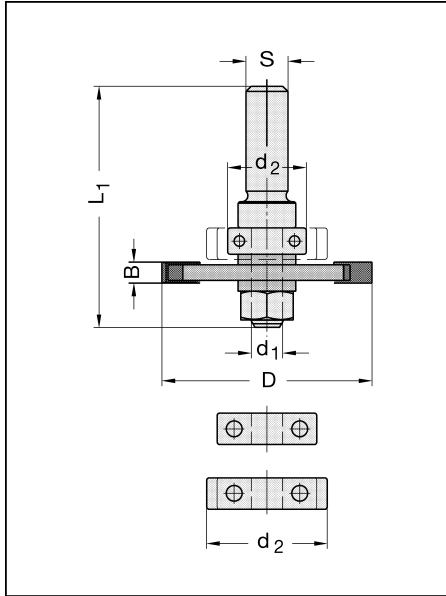


Biscuit Slotting Cutter Set T.C.

25173



D mm	d ₂ mm	B mm	L ₁ mm	d ₁ mm	Shank mm	Part-No.	Price each
Compl. Set							
40	15/19/23	4	46	6	8	25173-5-40001-R ●	75,50
Grooving saw							
40	-	4	-	6	-	24151-5-40040-0 ●	29,50

Technical details:

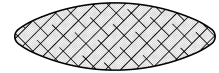
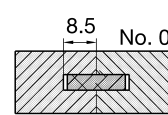
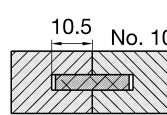
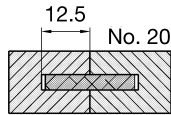
Cutter set consisting of arbor, 3 ball bearings d₂ = 15/19/23 mm, grooving saw and set of spacers, Z2, T.C.-tipped, right-hand rotation. For manual feed.

Application:

For grooving Biscuit dowel joints on portable routers.

Spare parts / Accessories

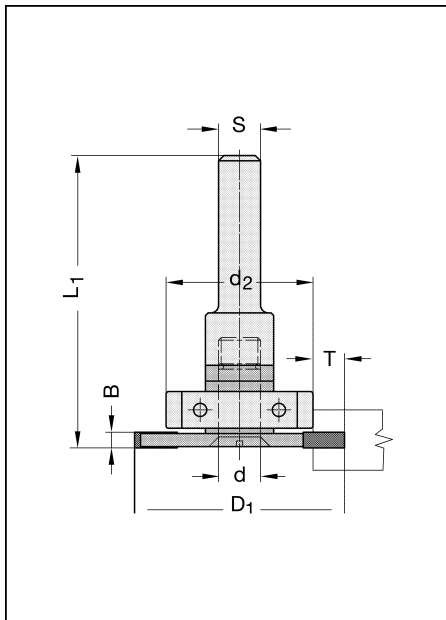
		PU
Arbor	d = 6 mm, with spacers, without ball bearing	24443-0-06000-R 1
Ball bearing	15 mm, for biscuit No.20	39050-0-15006-0 5
Ball bearing	19 mm, for biscuit No.10	39050-0-19006-0 5
Ball bearing	23 mm, for biscuit No. 0	39062-0-19023-0 5



Laminate floor Slotting Cutter Set T.C.

new

25163



D mm	d ₂ mm	T mm	B mm	L ₁ mm	Shank mm	Part-No.	Price each
Compl. Set							
40	28	6	2,5	54,5	8	25163-5-28025-R ●	77,50
40	28	6	2,8	54,8	8	25163-5-28028-R ●	78,00
40	32	4	2,5	54,5	8	25163-5-32025-R ●	78,00
40	32	4	2,8	54,8	8	25163-5-32028-R ●	78,50

Technical details:

Cutter set consisting of interchangeable shank with tool holding fixture, set of spacers, ball bearing guide set with ring, T.C.T. grooving saw Z = 2 with countersunk bore. Right-hand rotation. For manual feed.

Application:

For pre-cutting of Laminate floor panels at repair or insert work.

Spare parts / Accessories

		PU
Ball bearing	22,0/28,0 mm, d = 8,0 mm	39062-0-22028-0 5
Ball bearing	22,0/32,0 mm, d = 8,0 mm	39062-0-22032-0 5
Grooving saw	40 x 2,5 x 8 mm	24153-5-40025-A 1
Grooving saw	40 x 2,8 x 8 mm	24153-5-40028-A 1
Grooving saw	40 x 3,0 x 8 mm	24153-5-40030-A 1
Grooving saw	40 x 3,5 x 8 mm	24153-5-40035-A 1
Interchangeable shank	S = 8 mm	39513-0-00000-R 1
Spacer	16 x 1 x 8 mm	39545-0-16010-0 1
Spacer	13 x 2 x 8 mm	39545-0-13020-0 1
Spacer	13 x 3 x 8 mm	39545-0-13030-0 1
Countersunk screw	M 8 x 20,7, d = 8 mm	39056-0-08207-R 1